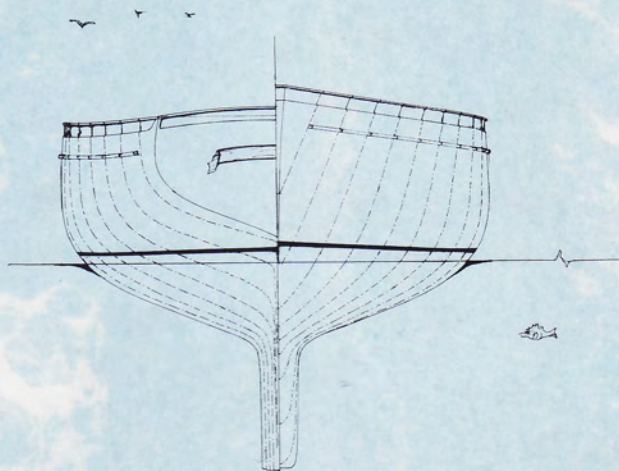
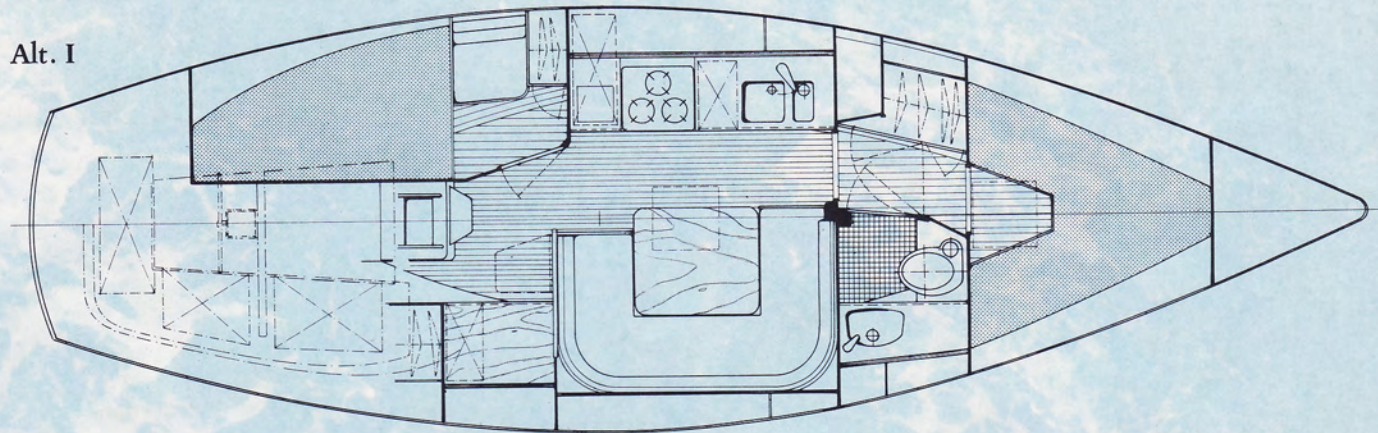


Alt. I

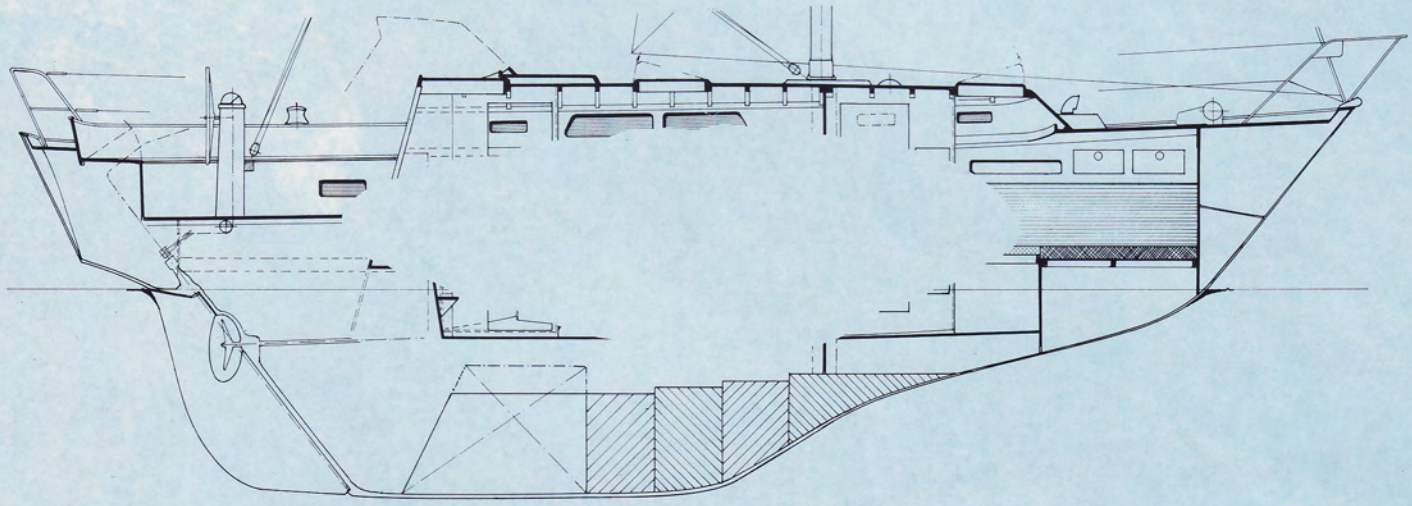
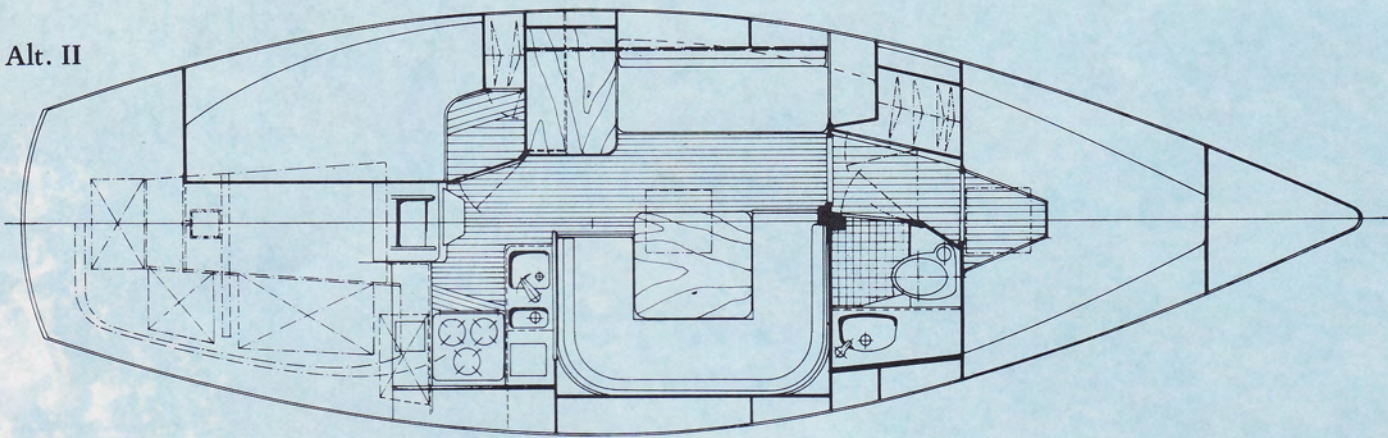


#### DATA

Loa	10,28 m
Lwl	8,20 m
Beam	3,33 m
Displac.	5,9 ton
Ballast (lead)	2,5 ton
Draft	1,60 m
Watertank	260 liter
Dieseltank	100 liter
Mainsail (standard)	22,5 m <sup>2</sup>
Stormjib	14,0 m <sup>2</sup>
Jib (standard)	23,0 m <sup>2</sup>
Genoa II	32,0 m <sup>2</sup>
Genoa I	38,0 m <sup>2</sup>
Spinnaker	82,0 m <sup>2</sup>
Mastheight (masthead)	12,5 m
Mastheight waterline	14,25 m
Motor: Volvo Penta 2003	29 hp (20,5 kW)



Alt. II

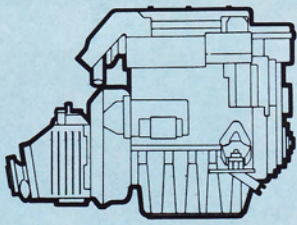


THIS BOAT IS OF A TYPE  
APPROVED IN ACCORDANCE WITH  
THE NORDIC RULES BY

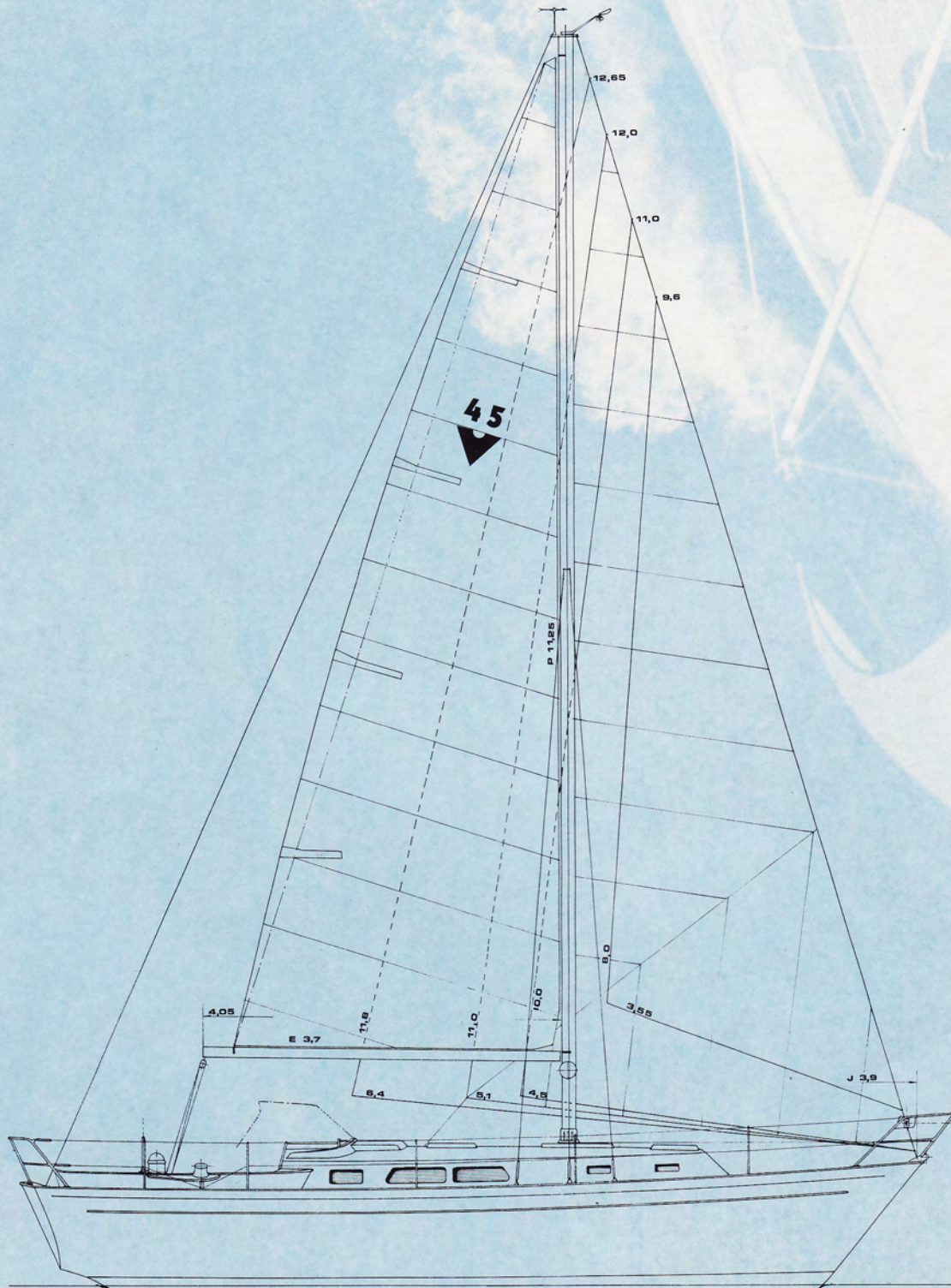


THE NATIONAL SWEDISH ADMINISTRATION  
OF SHIPPING AND NAVIGATION

MAX ENGINE POWER kW [REDACTED]  
MAX LOAD INCL PERSONS KG [REDACTED]  
MAX NUMBER OF PERSONS [REDACTED]  
TYPE CERTIFICATE NO S [REDACTED]



powered by  
**VOLVO PENTA**



DESIGN: **JOHN H.V. LINDBLOM** N.A.



**VINDÖMARINAB**  
S 440 90 Henån, Sweden.  
Tel. 0304-39290. Telex 21233 vindoe S.